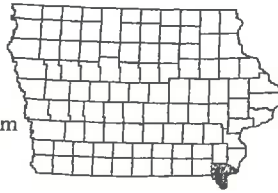


LEE COUNTY

P.O. Box 218, 2652 Hwy. 61
 Montrose, IA 52639
 319/463-7673
 conservation@leecounty.org
 leecounty.org/Services/homepage.htm



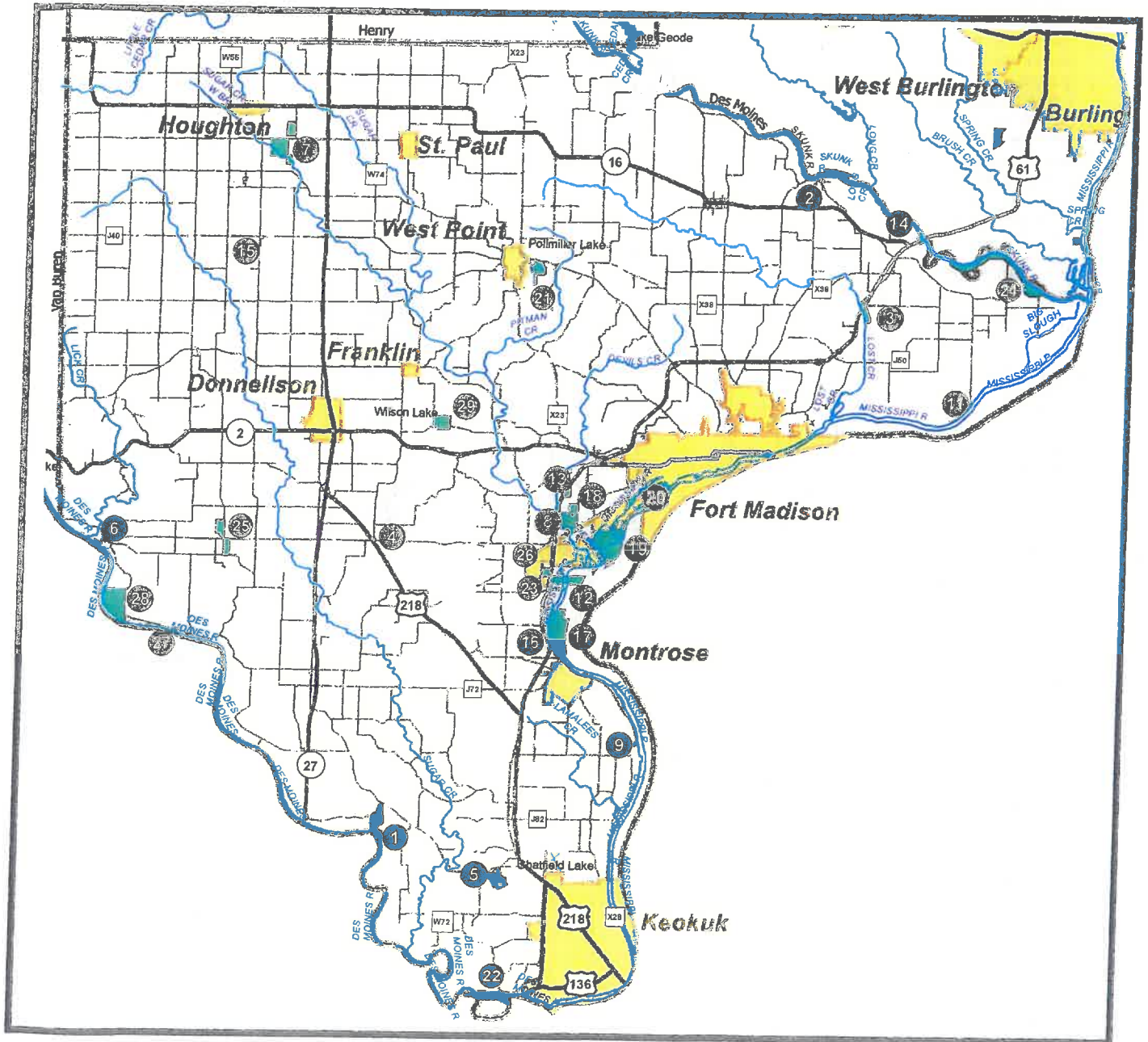
Legend

- County Facility
- Trails
- Highways
- Roads
- Water Trail
- River/Lakes
- City/Town Limits



Office Hours
 8:00am-5:00pm Monday-Friday

Scan this Q.R. Code with your phone for additional information on this county.



Lee County

	ACREAGE	CAMPSITES: Electric/F-ull Hookup/Non-Electric Equestrian/Youth/Dump Station/Wifi	WATER: Drinking/Showers	TOILETS: Flush/Wault	CABIN RENTAL: Seasonal/Year Round	SHELTER: Enclosed/Open/Fire/Rental	PICNICKING	TRAILS: Bike-Hard Surface/Limestone/Bike/Water Equestrian/Ming/Snowmobile/XC Ski-Groomed	SWIMMING: Beach/Pool	FISHING: Jetty/Pier/Lake/Access	BOATING: Canoe/Electric/Motor/BR-Boat Rental/Ramp	SPORTS: Archery/Baseball/Disk Golf/Konshohe Ice Skating/Playground/Shooting Range/Slacking Tennis/Mines Sports	SITES: Amphitheater/Arboretum/Bird Watching Wildlife Exhibit/Historic Sites/Mature Center Prairie/Wetland/Woodland	HUNTING: Forest/Upland/Wetland
1. Amborn-Pagin Wildlife Area 2020 340th St. off Argyle Rd	144						H1, E, F	S	M, C, E	W		P, B, Wo	F, U	
2. Augusta Access 1414 Perkins Rd. JCT. X 38	4					P		S	M, C, E			B, Wo		
2. Burks Run 1798 Hwy. 61, NE of Ft. Madison	59						H2			W		B, Wo	F, U	
4. Charleston Park 2546 198th Ave., S of Donnellson	1					OF1	P					B		
6. Chatfield Park 3593 Lake Rd., NW of Keokuk	90	E26, N6, D	D	V		OR, OF	H4, S, X	L19	C, E, R	H, P, I		H, B, Wo		
6. Croton Civil War Park 1123 2554th St., Co. Rd. J62	6		D	V		ER	P			P		H, B, Wo		
7. Denning Conservation Area 1640 130th St., S of Houghton	260		D	V		OF	P	H3, O, X		G, F		P, B, Wo		
8. Devil's Creek Access 2496 263rd Ave., 2.5 mi. W of Ft. Madison, X23	4						P	S	M, C, E			B, Wo		
9. Galland School 3160 Mississippi River Rd., S of Montrose	3					OF	P					H, B, Wo		
11. Green Bay Access 2112 Green Bay Rd., E of Wever	1						P	S	M, C, E, R			B		
12. Heron Bend Conservation Area 2652 Hwy. 61, 3 mi. N of Montrose	322		D	V		ER1	P	H2, O, X	S	M, C, E, R	W	E, W, P, B		
13. Heron Bend Fishing Area Hwy 61, 5 w. of Ft. Madison	21						P	L6	C, E	W		B		
14. Indian Path Park 1599 Hwy. 61, NW of Wever,	6		D	V			P	S	M, C, E, R			B, Wo		
15. LaCrew Roadside Rest Area 1800 160th St	3					OF	P					H, B		
16. Linger Longer Rest Area 2866 Mississippi River Rd., N of Montrose,	3		D	V		OF2	P					H, B		
17. Lotus Plant Conservation Area 3 mi. N of Montrose in the Miss. Riv.	464												W	
18. North Heron Bend 2478 263rd Ave., SW of Ft. Madison	158							S	C, E			W, B, Wo	W, F, U	
19. North Winds Conservation Area 2 mi. W of Ft. Madison in the Miss. Riv.	449												W	
20. Ortho Access 2438 Ortho Rd., S of Ft. Madison	85						P	H2, O	S	M, C, E		W, B, Wo		
21. Pollmiller Park 2148 Co. Rd. 100, E of West Point	86	E20, M11, D	D, S	F, V		OR1	P	H5, O, B, X, M	G	F, J, L10	C, E, DR, R	W, P, B, I, M	B, Wo	
22. Redwing Access Boat Ramp 3941 Valley Rd., W of Keokuk	75						P		S	M, C, E, R		B		
23. Reuther Refuge 2 mi. W of Montrose on Hwy. 61	18.5						P					W, B		
24. Skunk River Access 1760 400th Ave., NE of Ft. Madison,	2			V			P	S	M, C, E, R	W		B, Wo		
25. Upper Croton Access 6 mi. E of Croton	150						P	W				W	W, F	
26. Trumpeter Marsh 2513 Henry Lady Dr., Montrose						OR						B		
27. Turkey Run Access 2787 Bellast Rd., SW of Donnellson, 9 mi. W of Argyle Rd	20		D				P		S	M, C, E, R		B		
28. Turkey Run Wildlife Area 4 mi. S, 3 mi. W of Donnellson	232						H	L, S		W		W, P, B, Wo	W, F, U	
28. Wilson Lake 2185 220th St., Between Donnellson and Ft. Madison	143	E10, N6, D	D	F, V		OR, OF	P	H4, X, M	L	C, E, R	W, P, B, I, M	A, P, B, Wo		